

Shen Power Exporter

Documentation

Introduction

-Features-

This is a plugin for **Microsoft PowerPoint 2013 and 2019** (but should work on versions in between).

It exports full screen scaled images from the **presentation** into PNGs.

The images exported are without transmissions or animations - of which the slides are stripped prior to export.

- Resolutions over 720p supported.
- Both **.ppt** and **.pptx** file types supported but only within **Microsoft PowerPoint 2013-2019**.
- **Microsoft PowerPoint 2013-2019** does not need to be installed but the OS has to be able to run it and do all required steps – this makes portable versions of **Microsoft PowerPoint 2013-2019** compatible.
- Standalone compiled executable.
- Graphical user interface with drag and drop functionality for ease of use.

-Requirements and limitations-

Requirements:

- [Microsoft PowerPoint 2013-2019](#) English US – other versions might be supported in future.
- [Microsoft Paint](#)
- [Microsoft Windows 7,8,10 64bit](#) English US (1033) – should work on other language versions too, but untested.
- Admin privileges – the program has to block user input to assure that it runs without interruptions, for that it needs Admin rights.
- Standard hotkey setting in [Microsoft PowerPoint 2013-2019](#) – for more info see limitations section.
- A [presentation](#) file in [.ppt](#) or [.pptx](#) format.
- Proper keyboard layout selected – read more in limitations section.

Recommendations:

- It is highly recommended that any other windows, especially if opened in [Microsoft PowerPoint 2013-2019](#), [Microsoft Paint](#) and anything that is still unsaved be closed before running this program. **Shen Power Exporter** needs to read titles of windows and text within them so it is possible that having a window opened with same title and text within as those used by plugin get in the way and break the program causing it to freeze or further damage your unsaved work. There are precautions built into the program to avoid this situation, but it's still 1.0 and it hasn't been extensively tested to account for every eventuality. To know more about what exactly the program is doing and looking for on each step proceed to user guide section.
- Any programs that might use notifications, pop-up messages of any sort – like Winamp on changing tracks, e-mail clients on receiving mail, or torrent clients which inform user that a download finished – should be closed or the notifications turned off. Otherwise the notification

from those programs can be accidentally captured during the screenshot phase when full screen slide show is loaded.

- It is recommended that prior to using this program, the user confirms that **Microsoft PowerPoint 2013-2019** can be run without problems (at times when it didn't run properly before, a message which suggests safe mode or turning off of **PowerPoint** Start screen pop up, these are accounted for in **Shen Power Exporter**, but some other things may break this program) and that it reads the **presentation** file you're intending to export the slides from (If it can't read it, then you will be notified by the program anyway).
- **IMPORTANT:** If you're using "**OutputSlides**" directory in **Desktop** path and it contains files named between **1.png** and **999.png** it is highly advised to move them to another path because otherwise they will get in the way of this program. The program won't overwrite them by itself, but it will freeze on "Do you want to overwrite?" dialog. Such freeze would require the user to use "Emergency Program Input Override" (see user guide) to either confirm the dialog, or more probably, to close the program and then exit and run it all again this time without such named files in that folder.

Limitations:

- This is a 64 bit only program.
- This program is intended for US English **MS Windows 7-10**, **MS PowerPoint 2013-2019** and **MS Paint**. Other language versions might work, but are untested.
- Some PowerPoint add-ins like "PDF Maker Office Addin" conflict with this software and should be disabled prior to use. Otherwise you'll need to use task manager to force close the app.
- This program relies on keyboard layout that is selected in the **OS**.

So far it's been tested and works on these layouts:

- ❖ English US
- ❖ Polish (Programmer)

If after the GUI stage it tells you it's been made on other keyboard layout than yours (It will if yours is other than Polish (Programmer)) then if you have any of the above set you can safely

press "OK" and it will still work. It is possible it will also work on layouts that I didn't test it on yet. I do expect keyboards like French and German or Dvorak's to cause problems.

- This program is intended for **Window 7,8,10 64bit OS**. It MIGHT work on other versions but I haven't tested that.
- It is absolutely paramount that standard hotkey settings are used in **MS PowerPoint 2013-2019** and also **MS Paint**. Here is the list of hotkeys with linked action that should be same in the environment you wish to use this program in:

❖ MS PowerPoint 2013-2019

- **Alt+w** (View tab) -> **l** = change view layout to "normal".
- **Alt+k** (Transitions tab) -> **t** (select transitions) -> **home** (select none).
- **Alt+k** (Transitions tab) -> **u** (select sound) -> **home** (select none).
- **Alt+k** (Transitions tab) -> **i** (timeout) -> **3** (set 3 seconds).
- **Alt+k** (Transitions tab) -> **l** (apply to all).
- **Ctrl+a** -> select all.
- **Alt+a** (Animations tab) -> **s** (select animations) -> **page up**, **home** (select none).
- **F5** = start full screen slideshow.
- **Print Screen** = put a screenshot in clipboard.
- **Shift+F6** = change back one pane.
- **Delete** = delete slide.

❖ MS Paint

- **Ctrl+v** = paste screenshot into the work area.
- **Ctrl+s** = save as.
- **Alt+n** = focus file name field.
- **Ctrl+a** = select all.
- **Ctrl+n** = start a new file.

- This program is intended to run on single screen configuration. If you're using multiple displays on your **OS** please unplug them and leave only one main display before you run this program.

The reason for this limitation is how "Presenter mode" is forced on multiple display configurations in **PowerPoint 2013-2019**. Within the program there is no reliable (as far as I know) way to

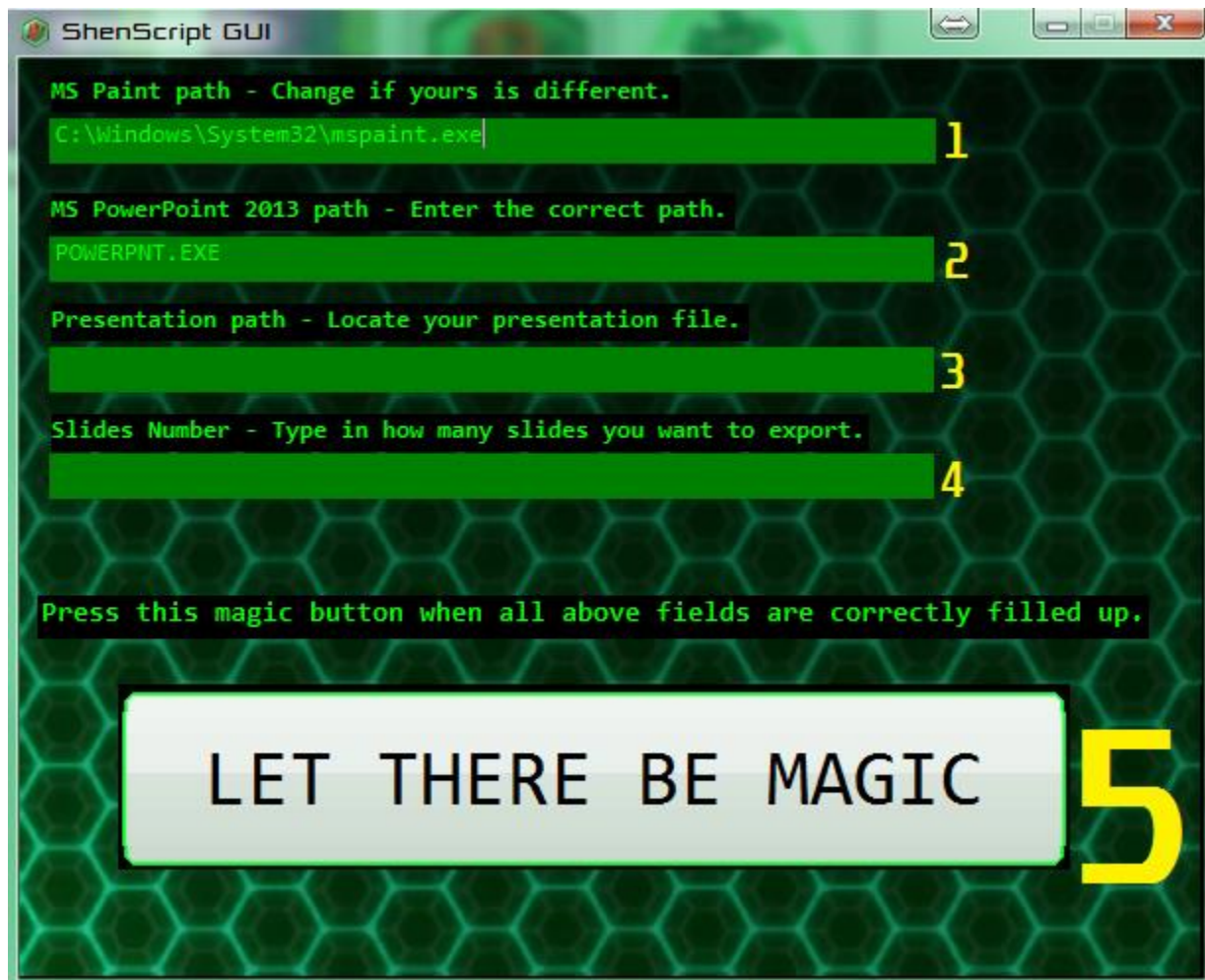
disable the presenter mode. There is only a hotkey to force running the slide show IN the presenter mode (but no hotkey to disable it). Otherwise this can be changed only by switching a checkmark on the ribbon or turning displays to main display (which isn't reliable).

If the demand will be enough, I'm willing to make a special "fix multi display" version of this program that will assume that the "presenter mode" is checked and then uncheck it. But for now, just use single display.

User guide

Emergency Program Input Override - At any point after you click “Let there be magic” and let the program run. Whenever you want to take over the control, use this key combination `[ctrl+alt+del]`.

-Step One - The GUI-



1 - This is where you enter the [Microsoft Paint](#) path.

The default Windows 7 64 bit English US path is set from the get go.

You can either change the path if your **MS Paint** is somewhere else by typing it in, pasting it in or dragging and dropping the **mspaint.exe** into the input field. ONLY files that are named “**mspaint.exe**” will be accepted.

- 2 - This is where you enter the **Microsoft PowerPoint 2013-2019** path.

By default, “**powerpnt.exe**” is filled in. If your Microsoft Office 2013-2019 with **PowerPoint 2013-2019** are installed correctly in the **OS** – this should suffice.

If though, your **PowerPoint 2013-2019** registry is corrupted OR you’re using some kind of portable version of **PowerPoint 2013-2019** you can still use it with this program after changing the path in this field.

The path can be either typed in, pasted in or filled in by dragging and dropping the **powerpnt.exe**. **PowerPoint 2013-2019** executable can be named anything as long as it’s an **.exe** file. The program will verify if the file description name is “**Microsoft PowerPoint**” to make sure it’s the right program plus product name if it’s “Microsoft Office” to make sure it’s the right program.

- 3 - In this field you put the path to your target **presentation**. The one from which you wish to extract full screen slides into PNG.

Both **.ppt** and **.pptx** extensions are acceptable.

Long filenames are not a problem either. Unicode filenames are acceptable too (Tested on Chinese filename).

If the file is located on the user **desktop**, full path is not required. Just a **filename.extension** will do. Wrongly inputted **presentation** path will result in termination of the program with read error. Files other than **.ppt** and **.pptx** won’t even be accepted.

Presentation path can be typed in, pasted in or filled in by dragging and dropping the target file into the input field.

- 4 - Type how many slides you want to export from the **presentation** here. This field can only accept positive numbers. Numbers up to 100 have been tested, but should work on higher numbers as well. Slides will be exported in their full screen scaled size, using the **PowerPoint 2013-2019**

slideshow and saved as PNG at `Desktop\OutputSlides` path – make sure you don't have such path already with files named `1.png` to `*expected number of slides*.png` or the program will break given that it's designed not to accidentally overwrite any files.

5 - This is the magic button. Press it after all the fields above are properly filled in.

If any field is filled wrongly – you should be notified by a message and allowed to make a required correction. Except for the `Presentation` path which will be verified completely after this step while the program is launching `PowerPoint 2013-2019` to check if `PowerPoint 2013-2019` can actually access and open the target file.

When everything is ready, after pressing this button you will be taken to a realm of magic in which the wizard (**this program**) will take control for the time being - making sure user input won't have any effect on the program commands that need to be run – and process all slides from the target presentation into exported PNG files.

To commit you can either click the button, or simply press `[Enter]` on your keyboard

-Step Two - User input verification phase-

After you press “Let there be magic” button, input verification phase will commence.

WARNING : This program will close all your instances of `powerpnt.exe` you might've had opened when you press the magic button so make sure all your previous work is saved and as recommended no unnecessary `PowerPoint 2013-2019` windows are opened or `powerpnt.exe` processes running. Be aware of this procedure to avoid data loss.

The program will verify and notify the user of any faulty input by verifying things in this order:

1. Check if the number of slides is a positive number (0 and negative numbers won't be accepted).
2. Check if the [MSpaint.exe](#) path is correct.
3.
 - Check if any instance of [MS PowerPoint](#) is running and close it if so.
 - Try to run the user given [PowerPoint](#) executable.
 - Verify if it's [MS PowerPoint](#) and if it's the [2013-2019](#) version, then close it.
4. Check if the given [Presentation](#) file has a [.ppt](#) or [.pptx](#) extension.

If any of the above give error, you will go back to Step 1 to correct your input. To learn more about how the fields should be filled correctly in the GUI – Check the Step 1 part of this User Guide.

-Step Three - Pre-Program initialization-

Here the program prepares its subroutines for focusing windows and lets the user know if he's using a different keyboard setting than the one it was compiled on – Refer to the "Limitations" part at the beginning of this documentation for more information on keyboard layouts. If you see a warning that says you're using a different keyboard layout, just press "ok" and it should be fine.

-Step Four - Program work environment initialization-

Program will run a series of subroutines to prepare its workspace. Here you will also see a prompt which will inform you how many slides/loops the program will export/do.

These are the tasks **the program** will do in this phase:

- ❖ Translate the target **presentation** path from full path i.e. **C:\dir\filename.extension** into **filename.extension** format for further use.
- ❖ Display the intended slide number info box for the user to read and confirm.
- ❖ Block user input from this point.
- ❖ Launch **MS Paint** and **MS PowerPoint 2013-2019**.
 - Close the GUI.
 - Launch **MS Paint**.
 - Auto-confirm in negative any pre-launch **PowerPoint** prompts like if it's trying to run in safe mode or turn off the **PowerPoint** Start.
 - Use the given **PowerPoint** to open the given **Presentation** file (And exit with error if opening the presentation file fails).
- ❖ Prepare **Microsoft PowerPoint 2013-2019** and the **Presentation** for the task at hand.
 - Set **PowerPoint** to normal view.
 - Set the transition of the current slide to none.
 - Turn off the transition sound of the current slide.
 - Set the slide show time allocated for this slide to 3 seconds.
 - Apply the above transition settings to all slides.
 - Navigate to the first slide in the **presentation**.
- ❖ Create the "**OutputSlides**" directory - if not yet present - on the user **desktop** for incoming slides.

-Step Five - The Main Program Subroutine-

Here is the main action.

The program will repeat this step as many times as many slides are to be exported.

Here are the tasks **the program** will do in this phase:

- ❖ Focus on the **MS PowerPoint 2013-2019** window and the correct pane.
- ❖ Select everything in the current slide.
- ❖ Disable any animations that might've been set.
- ❖ Start full screen Slide Show to fully display the slide.
- ❖ Grab the screenshot of the full screen slide and put it in the clipboard.
- ❖ Exit the Slide Show.
- ❖ Switch to the left pane.
- ❖ Temporarily delete the current slide (the program won't save these changes at the end).
- ❖ Focus on the **MS Paint** window.
- ❖ Paste in the captured full screen slide from the clipboard into the **MS Paint** space.
- ❖ Invoke "Save as" dialog in **MS Paint**.
- ❖ Focus on the "File Name" input field.
- ❖ Select everything in that field to override any previous string.
- ❖ Type in the destination path for the PNG image to be saved at.
- ❖ Save the image.
- ❖ Reset **MS Paint** by starting a fresh new empty file.
- ❖ Check if there are any more slides to export in this run. If there are, repeat this step till all the intended slides are exported.

-Step Six - Program End-

This is where you will end up if **the program** finished exporting all the slides you asked it to process.

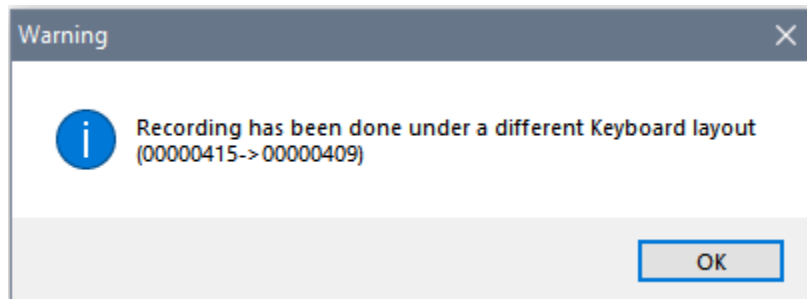
At this stage **the program** will clean up and terminate as listed:

- ❖ Focus then close **MS PowerPoint 2013-2019** without saving changes to the **presentation**.
- ❖ Focus then close **MS Paint**.

- ❖ Give back the input control to the user.
 - ❖ Terminate the main program.
-

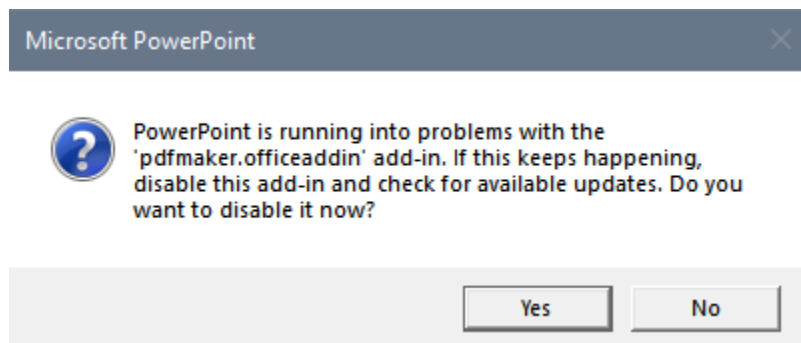
-Troubleshooting-

1. Keyboard layout warning:

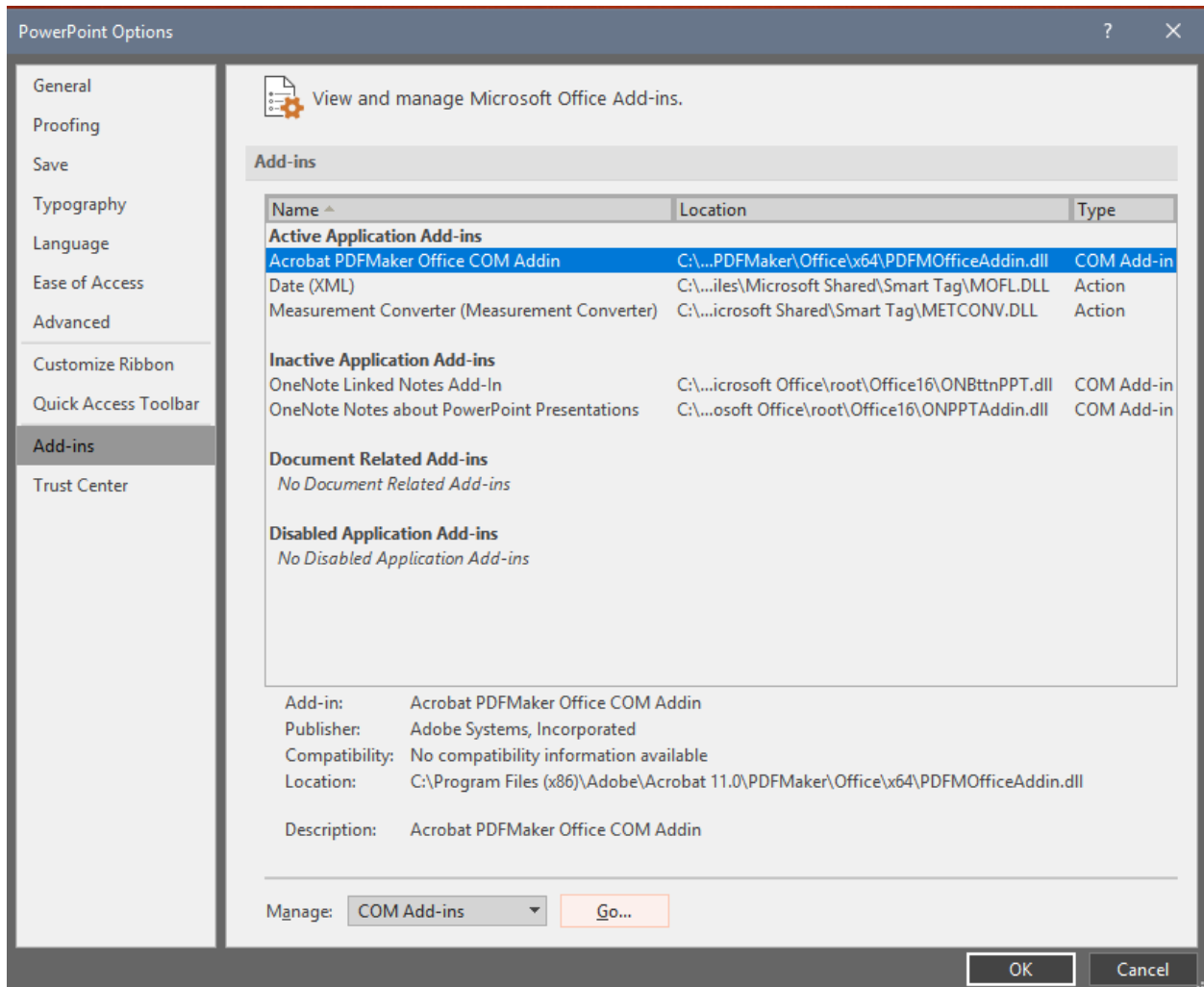


This is just a keyboard layout warning, if the numbers match (or are effectively same layout) then it's safe to ignore this warning.

2. It is important to disable PDF Maker Office Addin (and might also be needed to disable other 3rd party, non-Microsoft PowerPoint addins) prior to using ShenPowerExporter. Failing to do so will result in a conflict window (shown below) which you won't be able to click on unless you use task manager to force close ShenPowerExporter. This isn't a bug in ShenPowerExporter just Microsoft Office's poor way of handling addon loading.



Here's where you can disable such add-in inside PowerPoint (in this instance PowerPoint 2019):



Credits and Copyright Notice

2021-November-31

This program was made using the free version of AutoIT programming language and SciTE editor.

All rights to this program belong to ShenHua the owner of PLAYBAOZI.

Coding – ShenHua
GUI – ShenHua
Compiling – ShenHua
Testing – ShenHua
Documentation – ShenHua
